



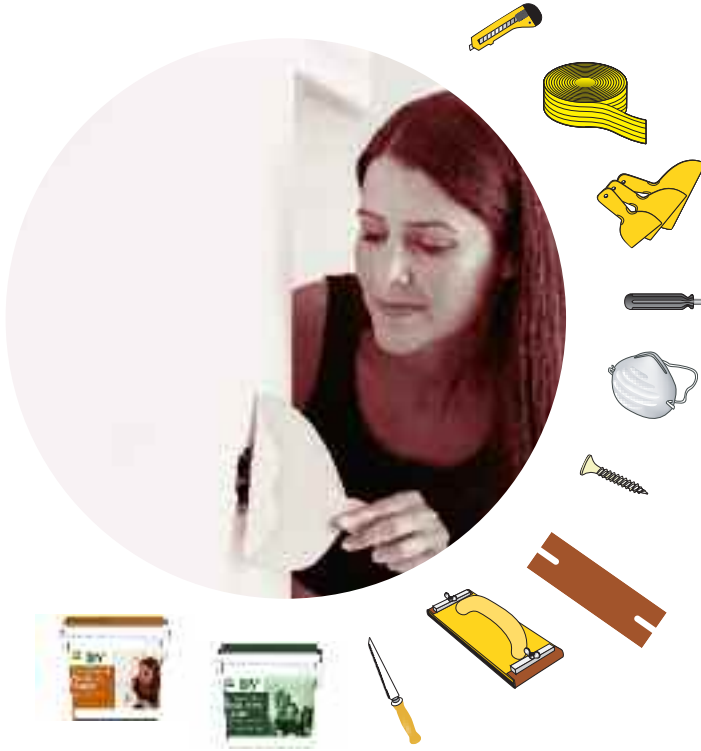
No. 1

Do - It - Yourself Solutions

Repairing holes and cracks in plasterboard walls



What you will need for the job



Boral Plasterboard Repair Kit

- DIY Total Joint Finish
 - DIY Patching Plaster
 - DIY Trimming Knife
 - DIY Plasterboard Screws
 - DIY Supa-Weave F.G.Tape
 - DIY 150mm Broad Knife
 - DIY 100mm Broad Knife
 - DIY Hand Sander
 - DIY Sandpaper 150 Grit
 - DIY Dust Mask
- Refer to Boral Plasterboard DIY Worksheet No. 6 – Jointing & finishing*

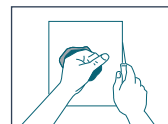
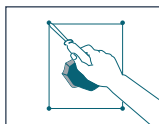
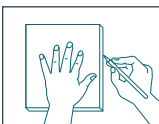
Other

- Straight Edge
- Keyhole Saw
- Screw Driver

How to repair your wall

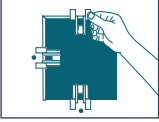
Removing damaged plasterboard

- 1 Using the plasterboard patch supplied, cut a piece slightly larger than the hole. Using the plasterboard patch as a template, carefully outline area to be removed.
- 2 Punch a hole in each corner with a screwdriver.
- 3 Insert a keyhole saw in hole, hold edge of damaged plasterboard and cut out.

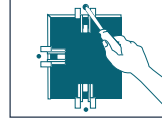


Installing new plasterboard patch

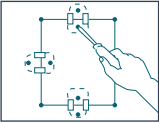
- 1 Slip repair clips supplied onto the existing wall edge. Use 2 clips for a small patch (10cm square) and 4 clips for larger patch (15cm x 20cm).



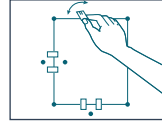
- 2 Screw repair clips into the wall minimum 20mm from edge and centre between tabs. This will line up the screws with the perforations in the clips. Recess all screw heads slightly below paper surface.



- 3 Place new plasterboard patch in position. Gently screw into plasterboard opposite repair clip screws, approx. 20mm from edge.

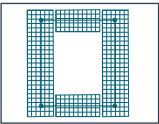


- 4 Bend repair clip tabs back and forth until they break off.

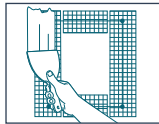


Finishing

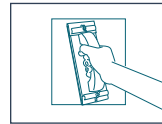
- 1 Tape along joint centre with Supa-Weave plasterboard tape. Do not overlap tape.



- 2 Using a broad knife, apply first coat of DIY Total Joint Finish. Spread over joints until tape is lightly covered. Clean broad knife edge often.



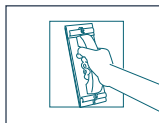
- 3 Let joint dry and sand lightly with hand sander.



- 4 Apply finishing coat - Cleaning broad knife edge often, spread and taper a thin coat of DIY Total Joint Finish two or three times the width of the tape. This makes the repaired area less visible.



- 5 When thoroughly dry, sand lightly to a smooth finish with hand sander. (Refer to DIY Project Sheet No.6 - Jointing and finishing.)



- 6 Paint the repaired area with same colour wall paint to finish.



How to repair cracks

Preparation

- 1 Ensure surfaces to be repaired are clean and dry and free of loose material.
- 2 Mix DIY Patching Plaster according to instructions on packaging.

Filling the cracks

- 1 Using a small broad knife, press DIY Patching Plaster firmly into wall cracks.
- 2 Scrape away excess plaster. Allow to set for 2-3 hours, longer in humid conditions.
- 3 When first coat has set hard, apply a second coat if necessary, tapering beyond edges of cracks.

Finishing

- 1 Apply a finishing coat of DIY Total Joint Finish. Spread lightly beyond edges of cracks.
- 2 When thoroughly dry, sand lightly to a smooth finish with hand sander. *(Refer to DIY Boral Plasterboard Project Sheet No.6 – Jointing and finishing).*
- 3 Paint the repaired area with same colour wall paint to finish.

Health & Safety

- 1 Do not ingest contents of product packaging. If ingested, seek medical advice. 
- 2 Avoid creating dust when handling, mixing or sanding as dust from packaged products may contain crystalline silica. Repeated inhalation of silica dust over long periods of time may lead to bronchitis, silicosis or cancer. If dust is unavoidable, ensure adequate ventilation, wear eye protection and an approved disposable face mask that conforms to Australian Standards AS 1716 Type P1 or P2.
- 3 If dust or paste causes skin irritation, use impervious PVC, Nitrite or Rubber gloves.
- 4 Keep contents out of reach of children. 

Contact Information


In Emergencies call 1800 033 011, Poison Information on 13 11 26.

Note: If you don't feel confident enough to take on this project, contact your local Boral Plasterboard sales outlet for a list of competent contractors in your area.

For further technical assistance or more information on Boral Plasterboard DIY products, please contact TecASSIST 1800 811 222 or your local Boral Plasterboard sales office:

QLD	07 3115 7300	SA	08 7002 6300	VIC	03 9214 2138
TAS	03 6278 9966	ACT	02 6280 4243	WA	08 6226 9825
NSW	02 9638 0571	NT	08 8984 4484		

Boral Australian Gypsum Limited
A.C.N. 004 231 976
676 Lorimer St, Port Melbourne Vic 3207
<http://www.boral.com.au>

 is a registered trademark of Boral Plasterboard.

